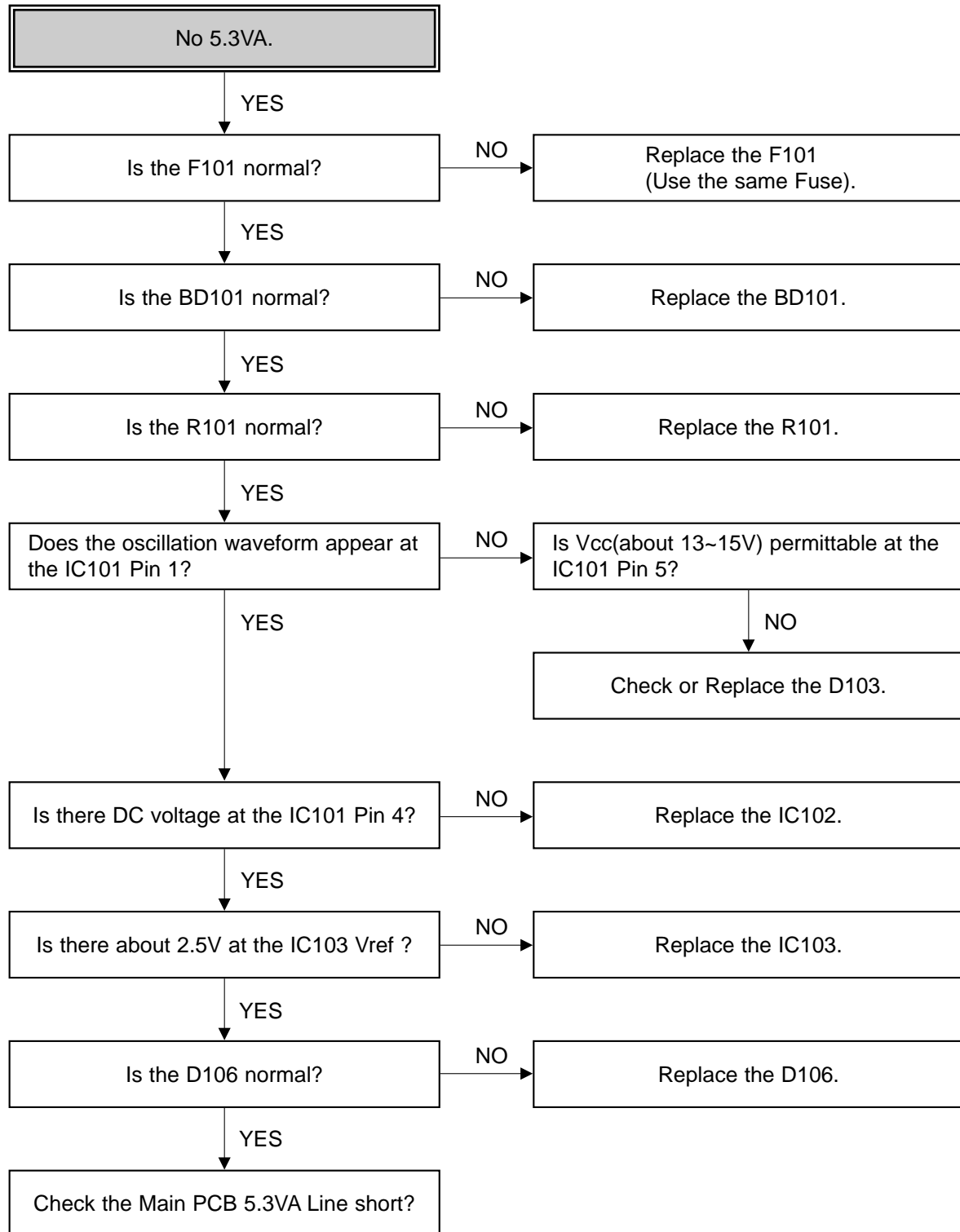


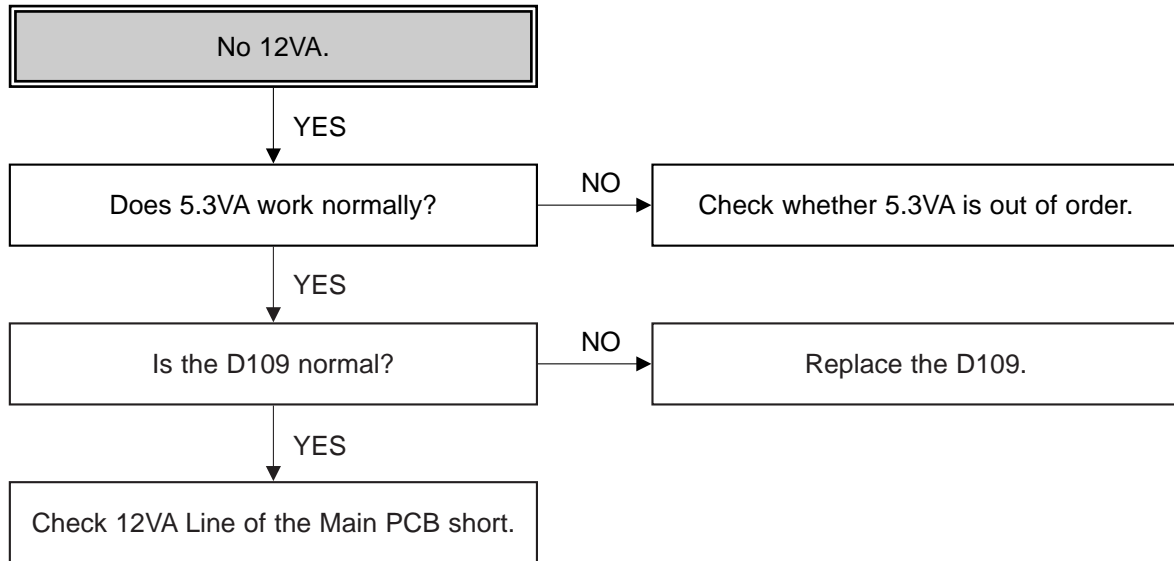
ELECTRICAL TROUBLESHOOTING GUIDE

1. Power Circuit(SMPS)

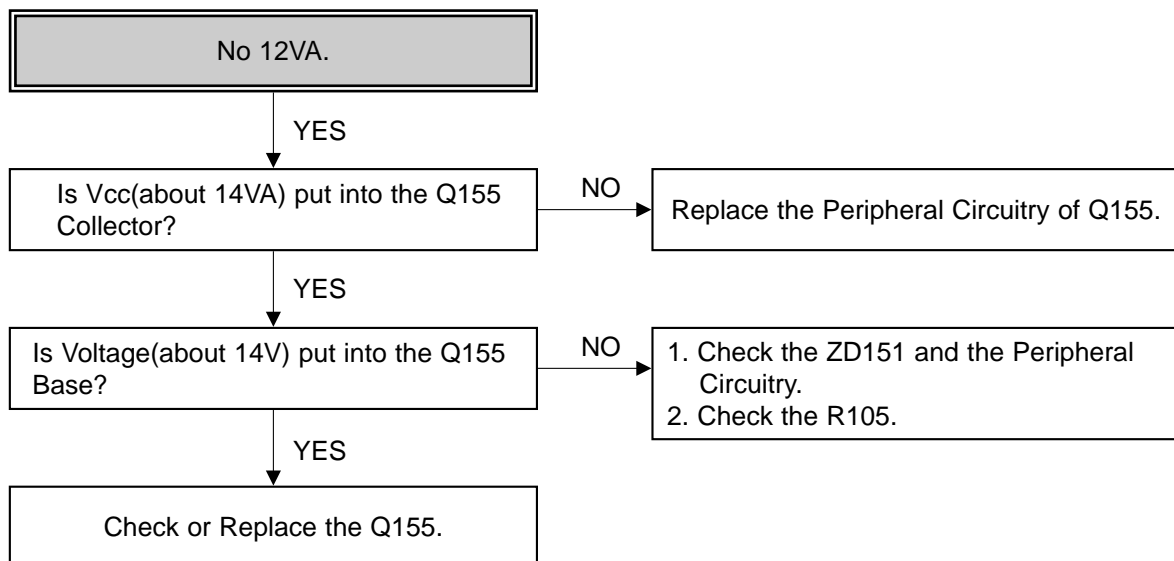
(1) No 5.3VA.



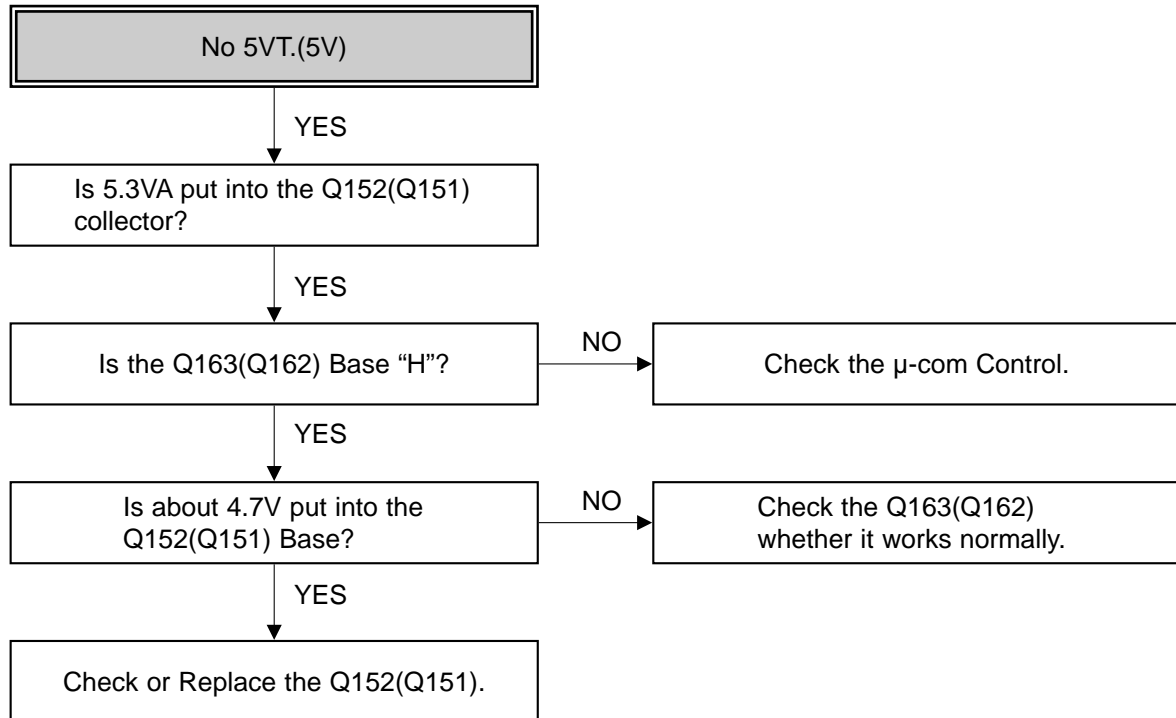
(2) No 12VA.(Capstan)



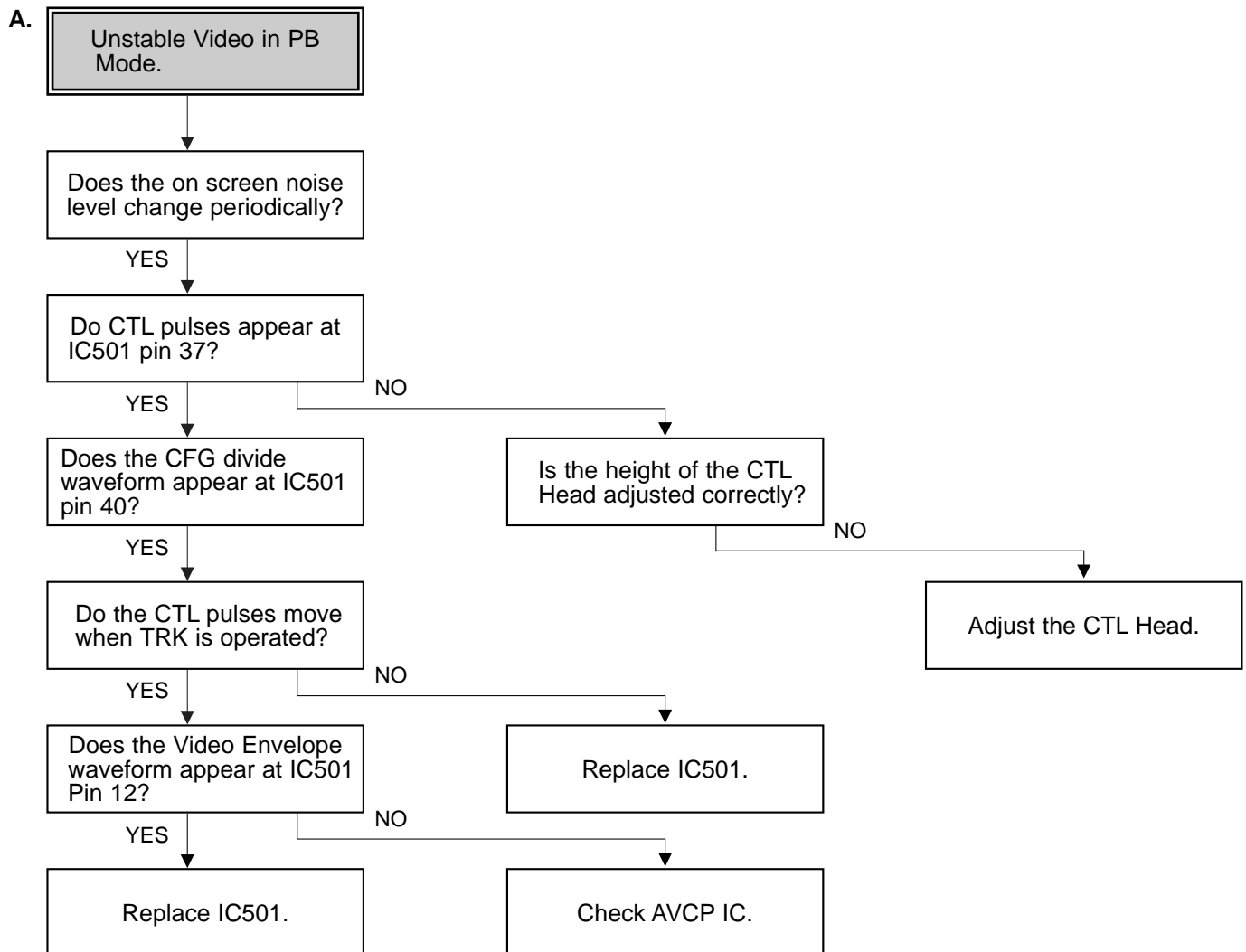
(3) No 12VA (CANAL, Buffer)



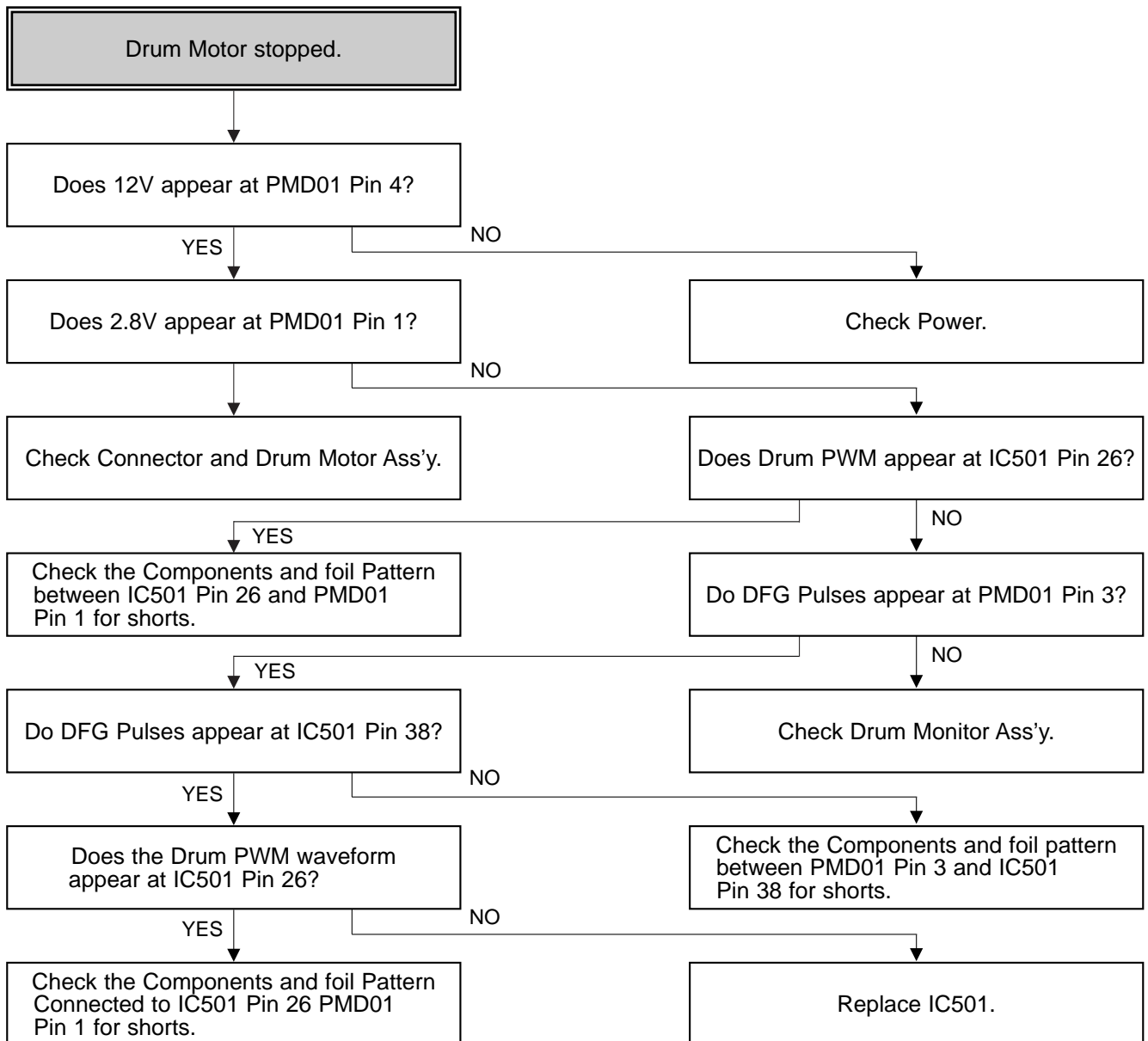
(4) No 5VT(5V)

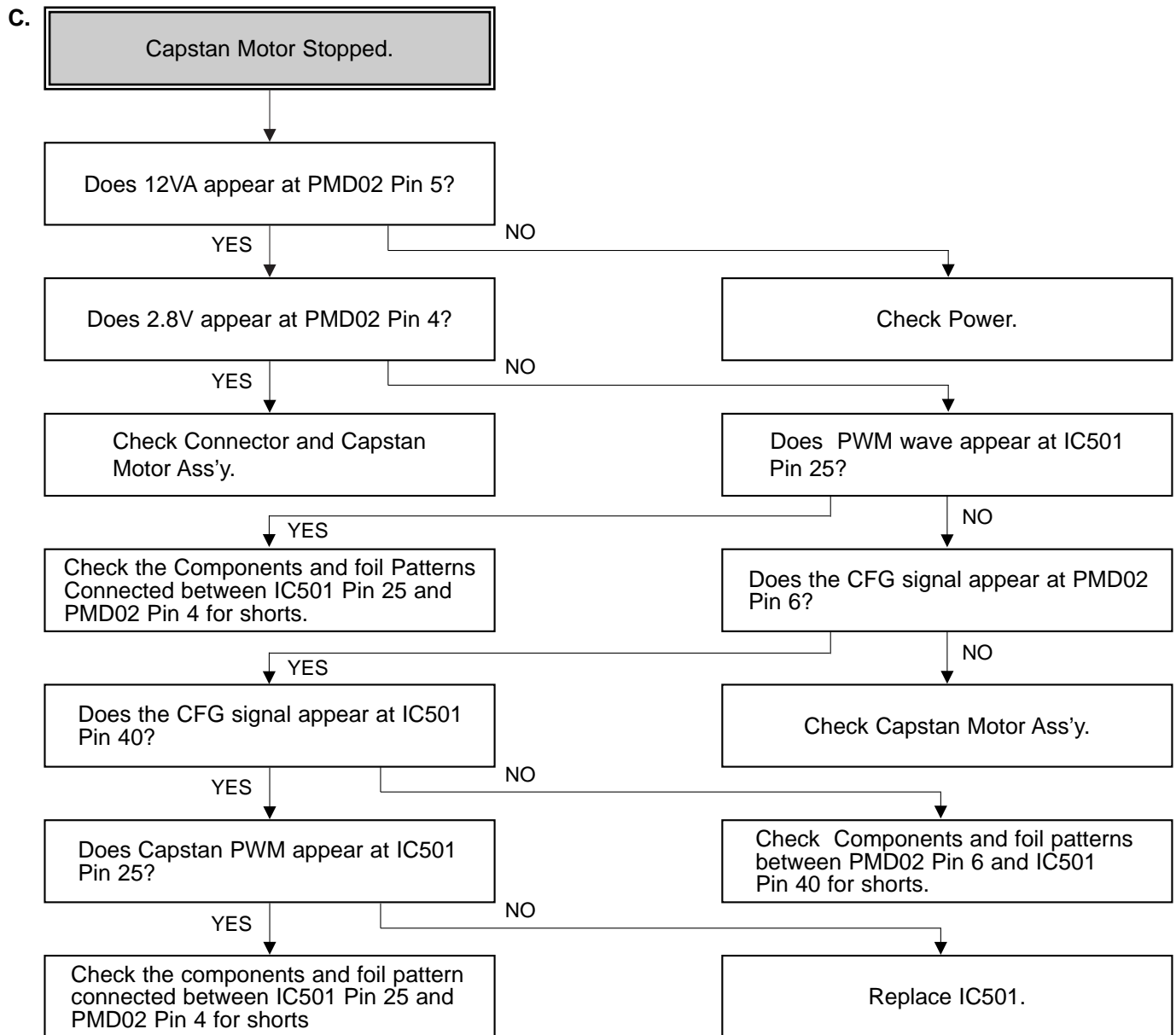


2. Servo Circuit



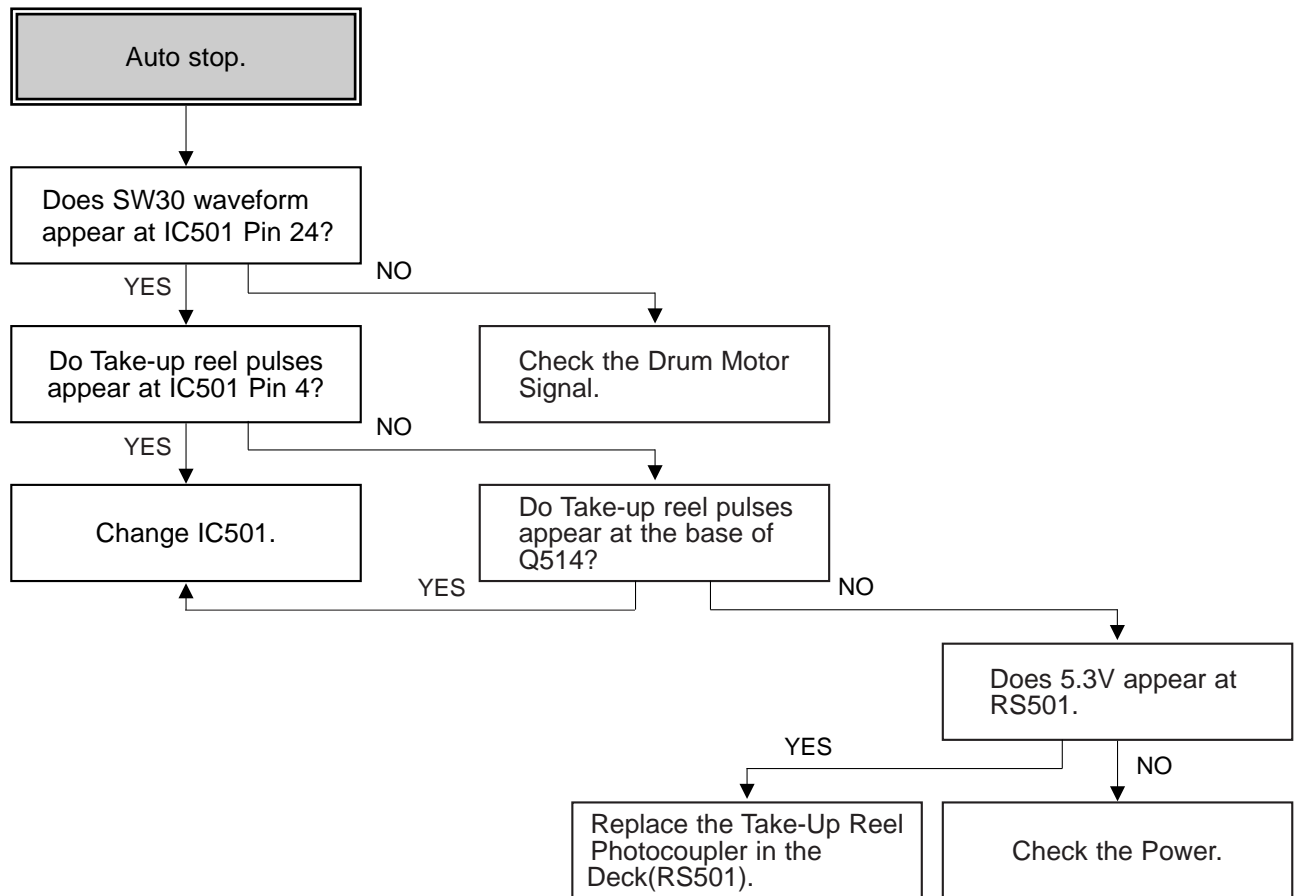
B.



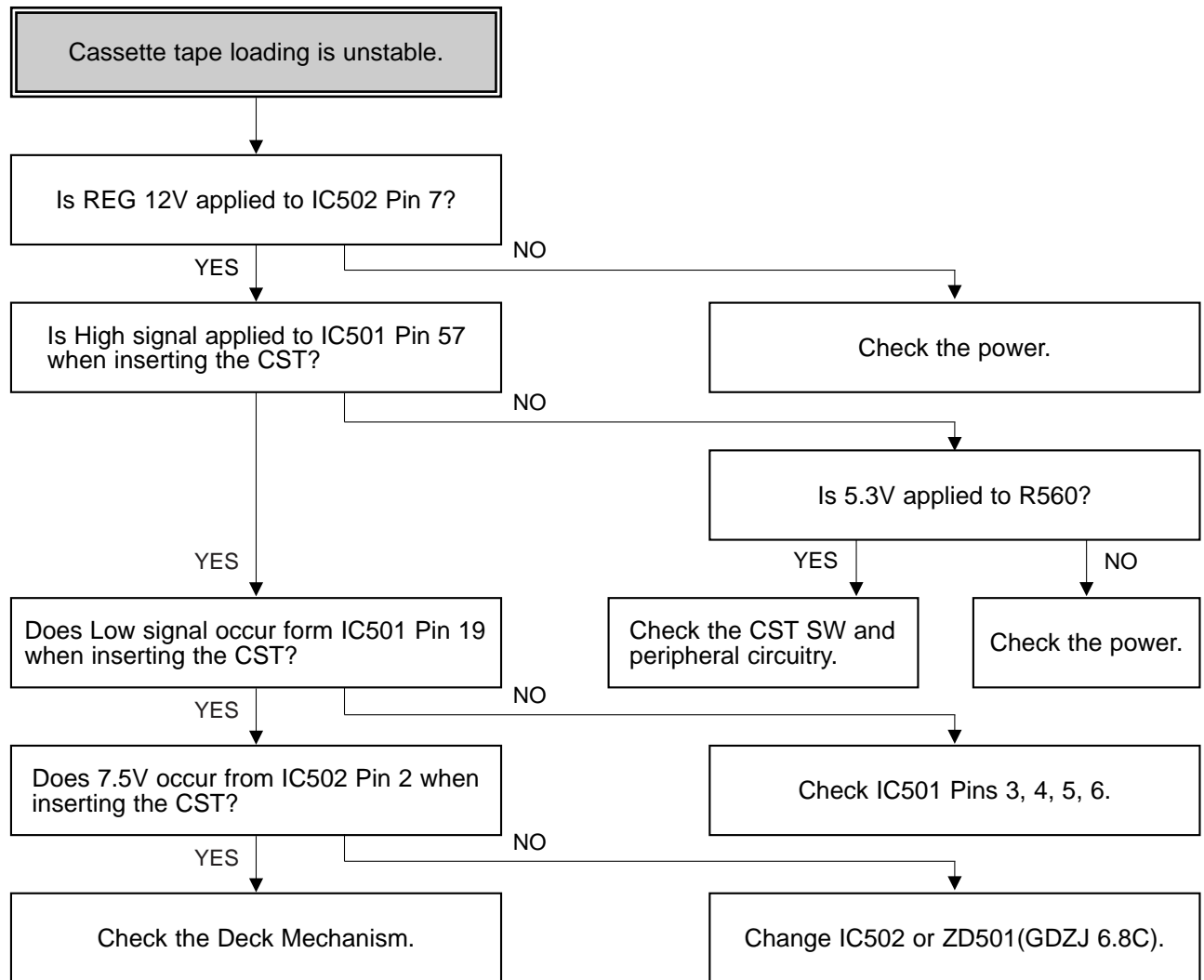


3. System & Front Panel Circuit

A.

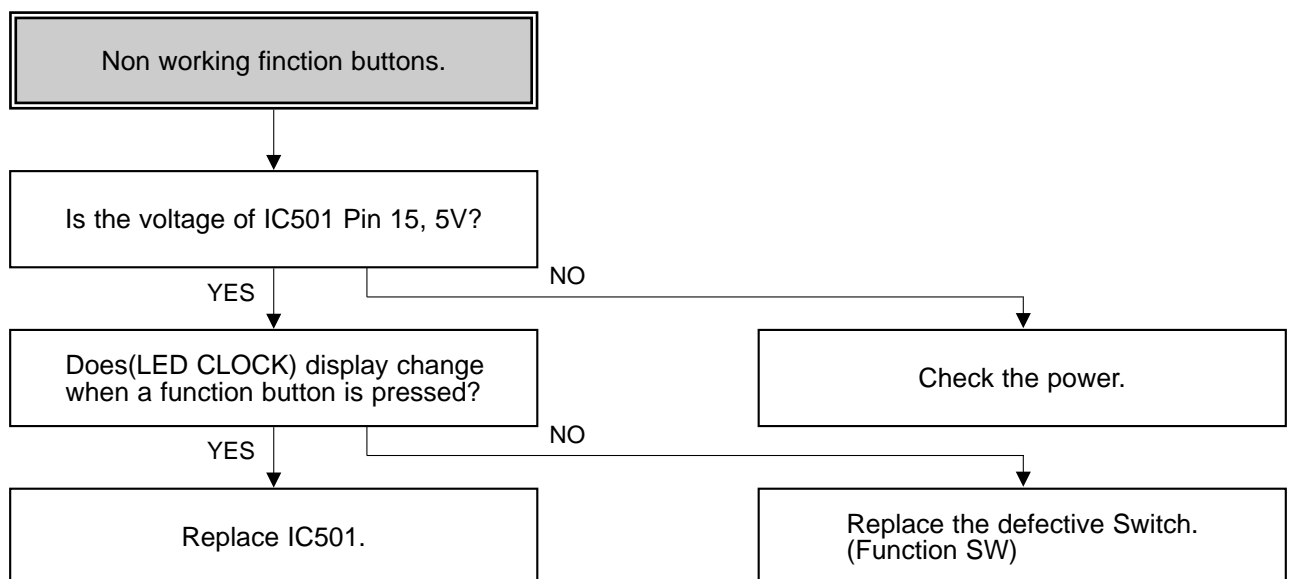


B.



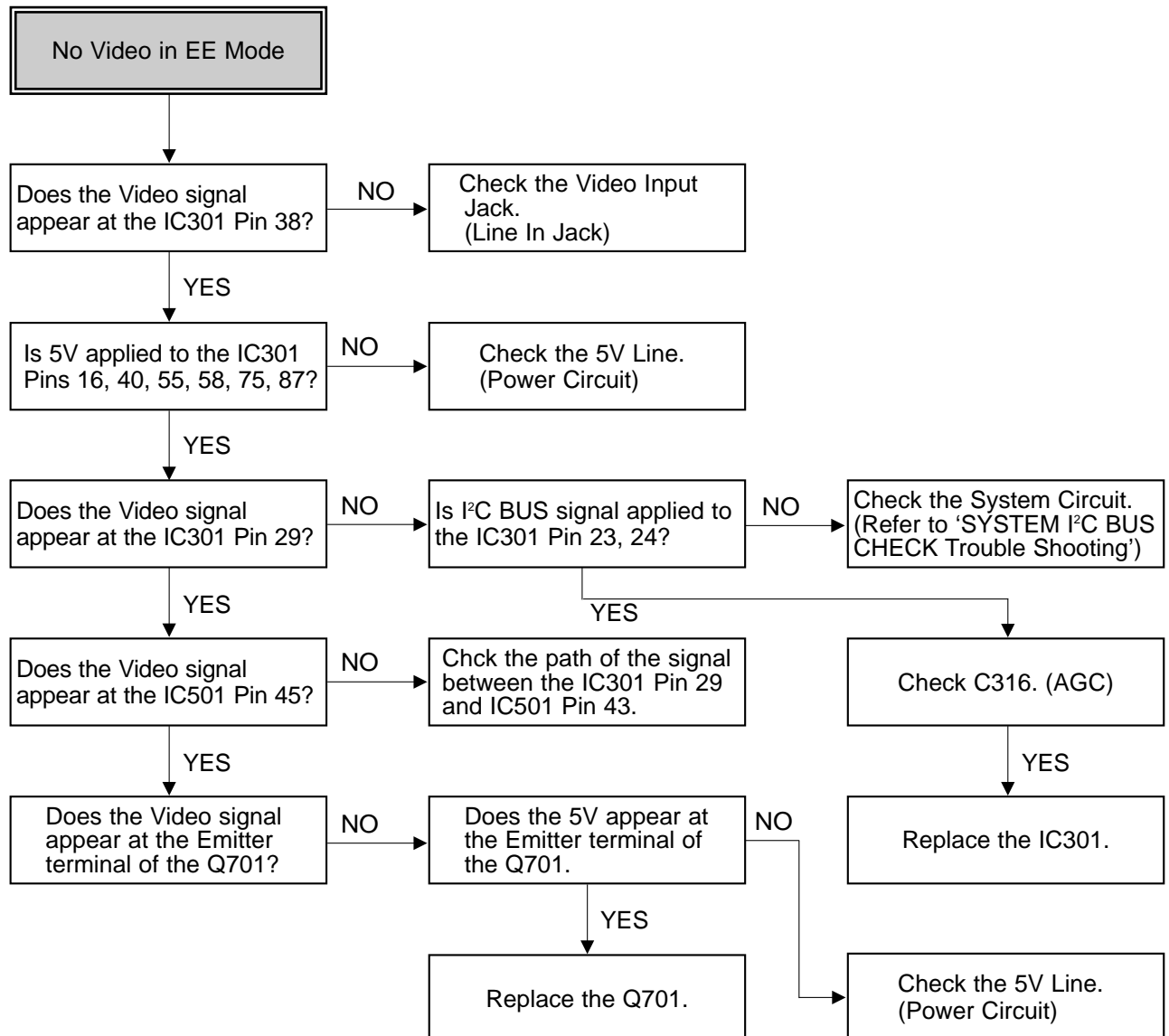
NOTE : Auto stop may also be caused by lack of lubrication,due to dried grease or oil.

C.

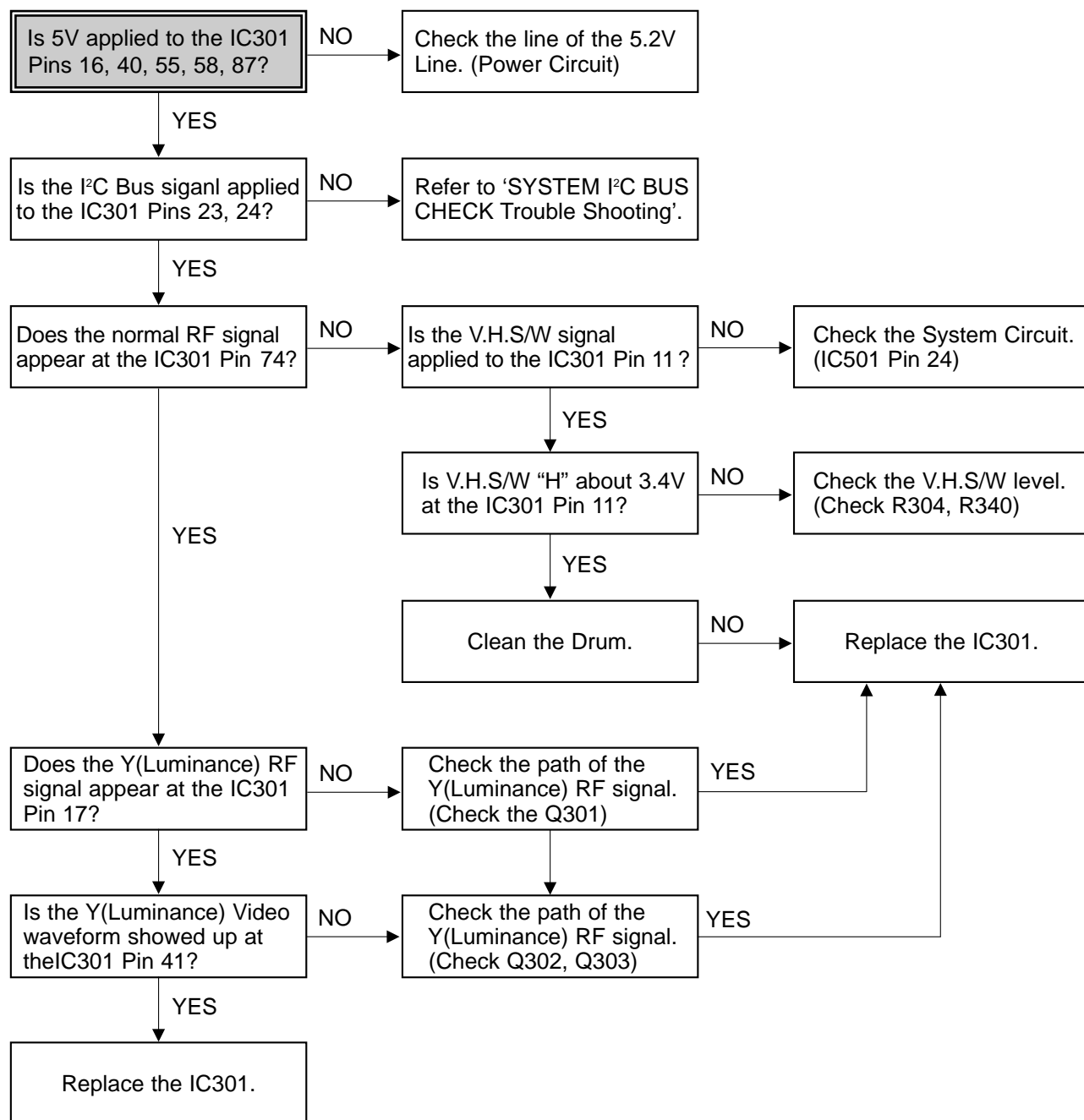


4. Y/C CIRCUIT

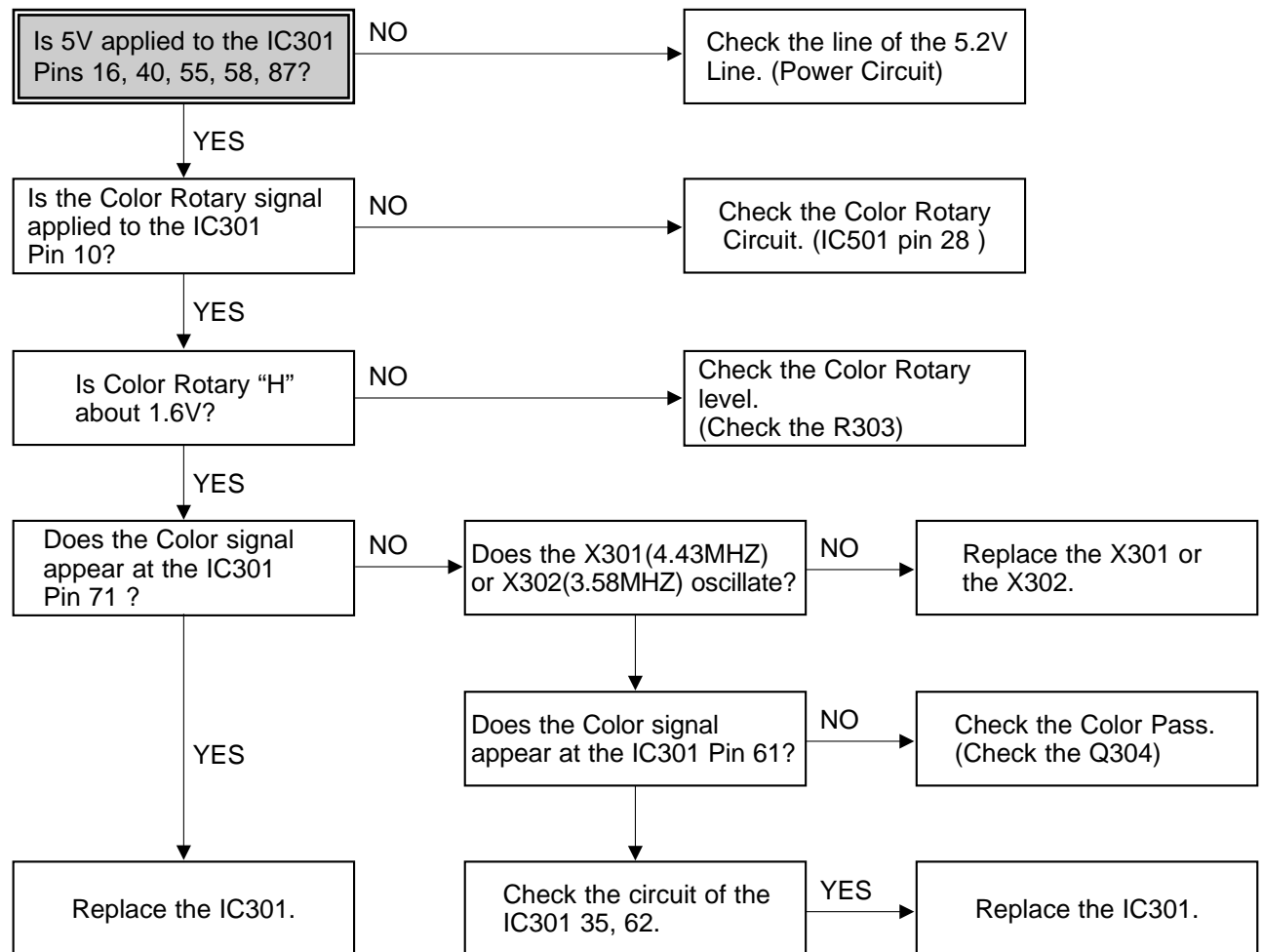
(1) No Video in EE Mode,



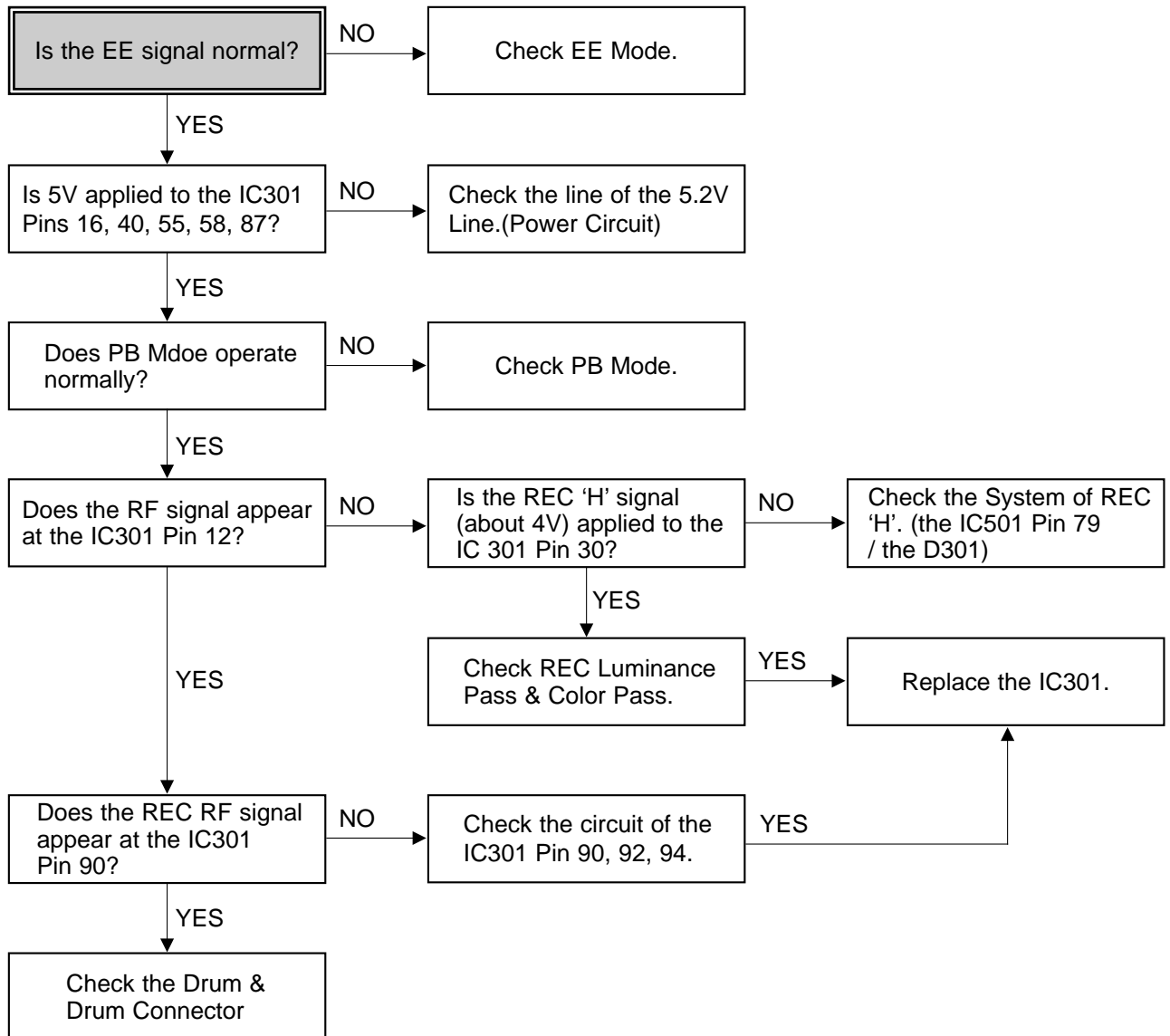
(2) When the Y(Luminance) signal doesn't appear on the screen in PB Mode,



(3) When the C(Color) signal doesn't appear on the screen in PB Mode,

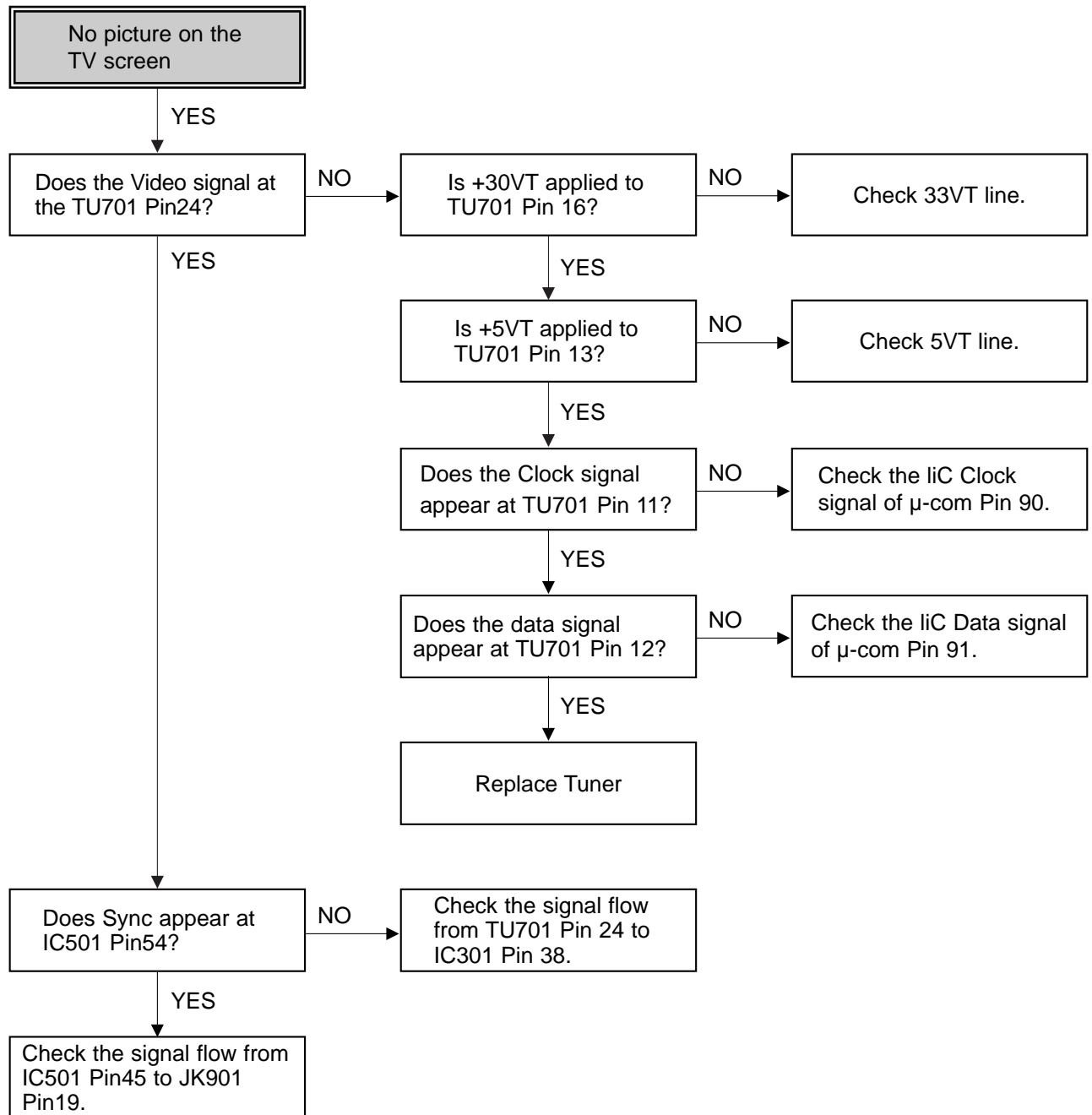


(4) When the Video signal doesn't appear on the screen in REC Mode,

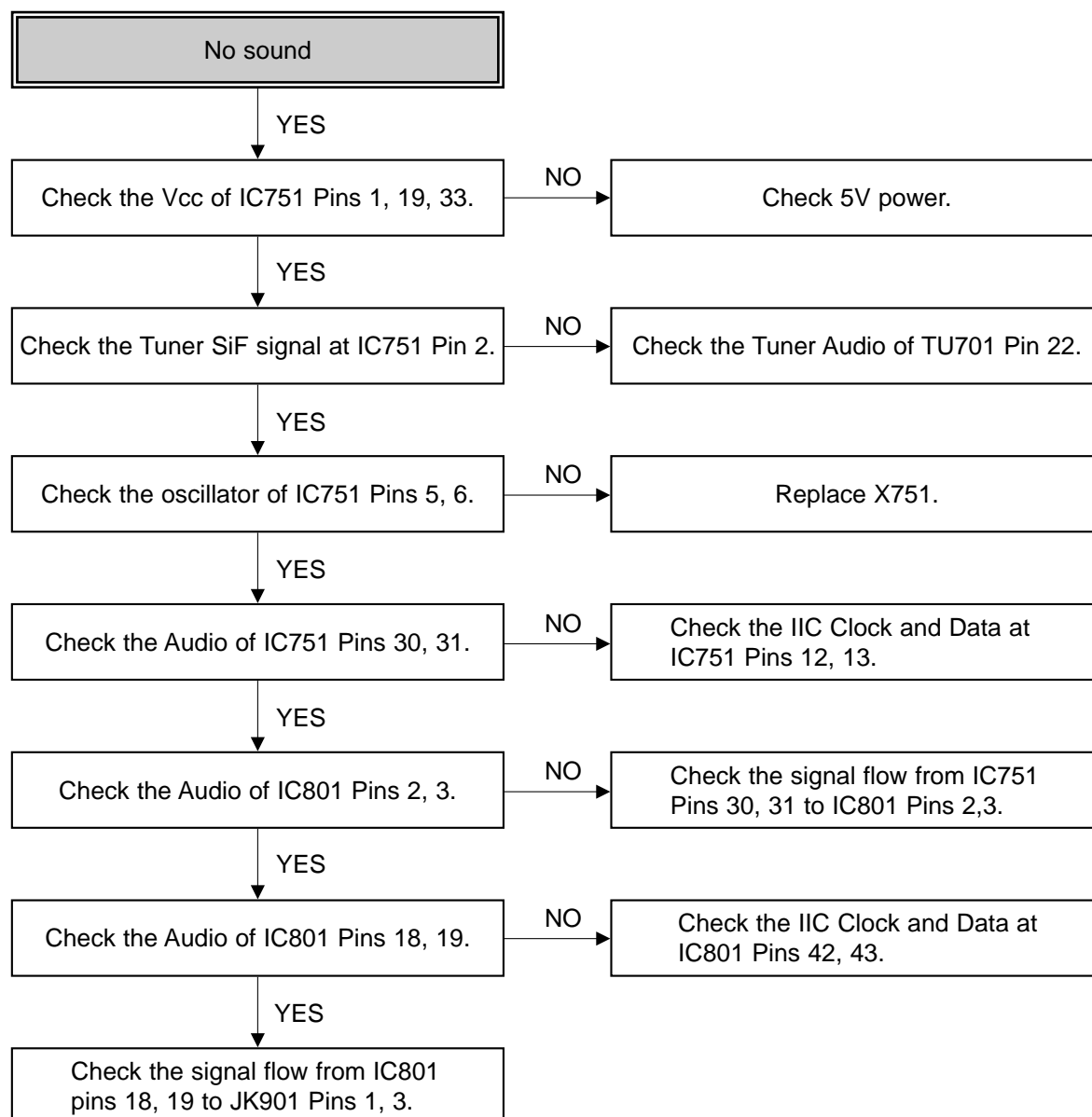


5. Tuner/IF circuit

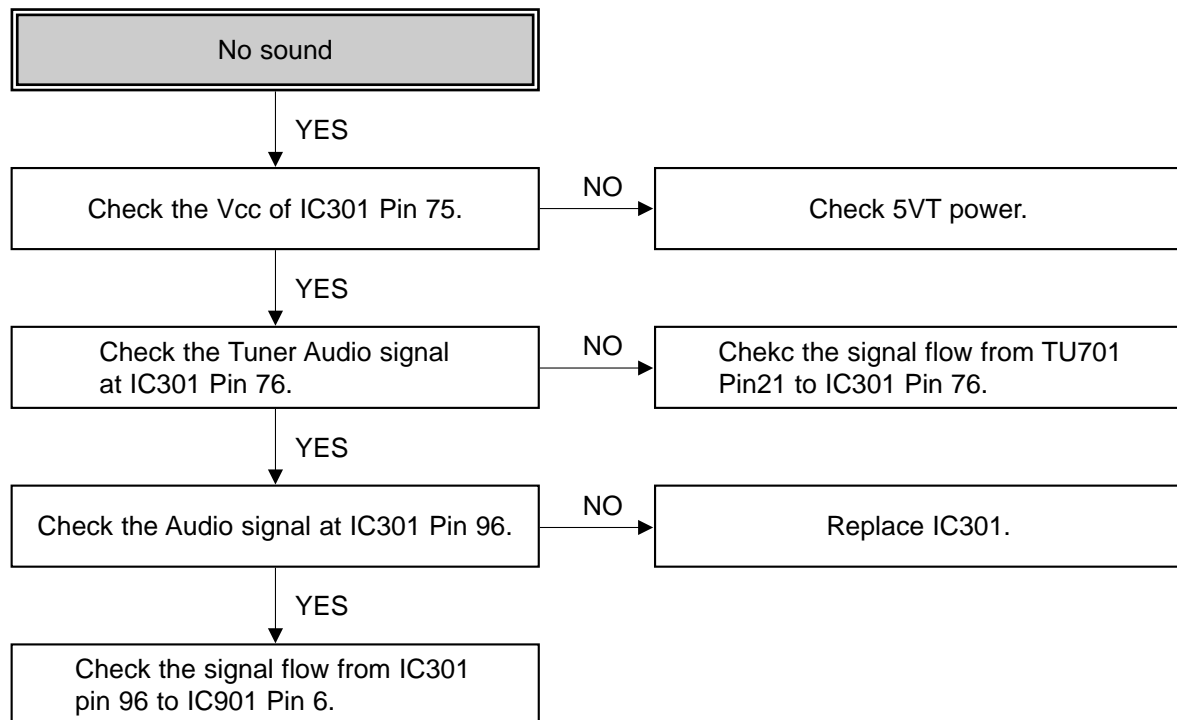
(1) No picture on the TV screen



(2) No sound (Hi-Fi Model)



(3) No sound (Mono Model)



6. Hi-Fi Circuit

